

ELAINE DAVIDSON'S

CLASSIC CROSS STITCH

Feathered Tulips based on a painting by L Thompson
FR 344



Embroidery Designs in counted cross stitch Chart Only

- Approximate design size 222 x 222 stitches
- 14 count 15.9 x 15.9 inches
- 16 count 13.9 x 13.9 inches
- 22 count 10.1 x 10.1 inches
- 25 count 8.9 x 8.9 inches
- 30 count 7.4 x 7.4 inches
- Made In Canada

**Date: 02/06/04
Copyright 2001**



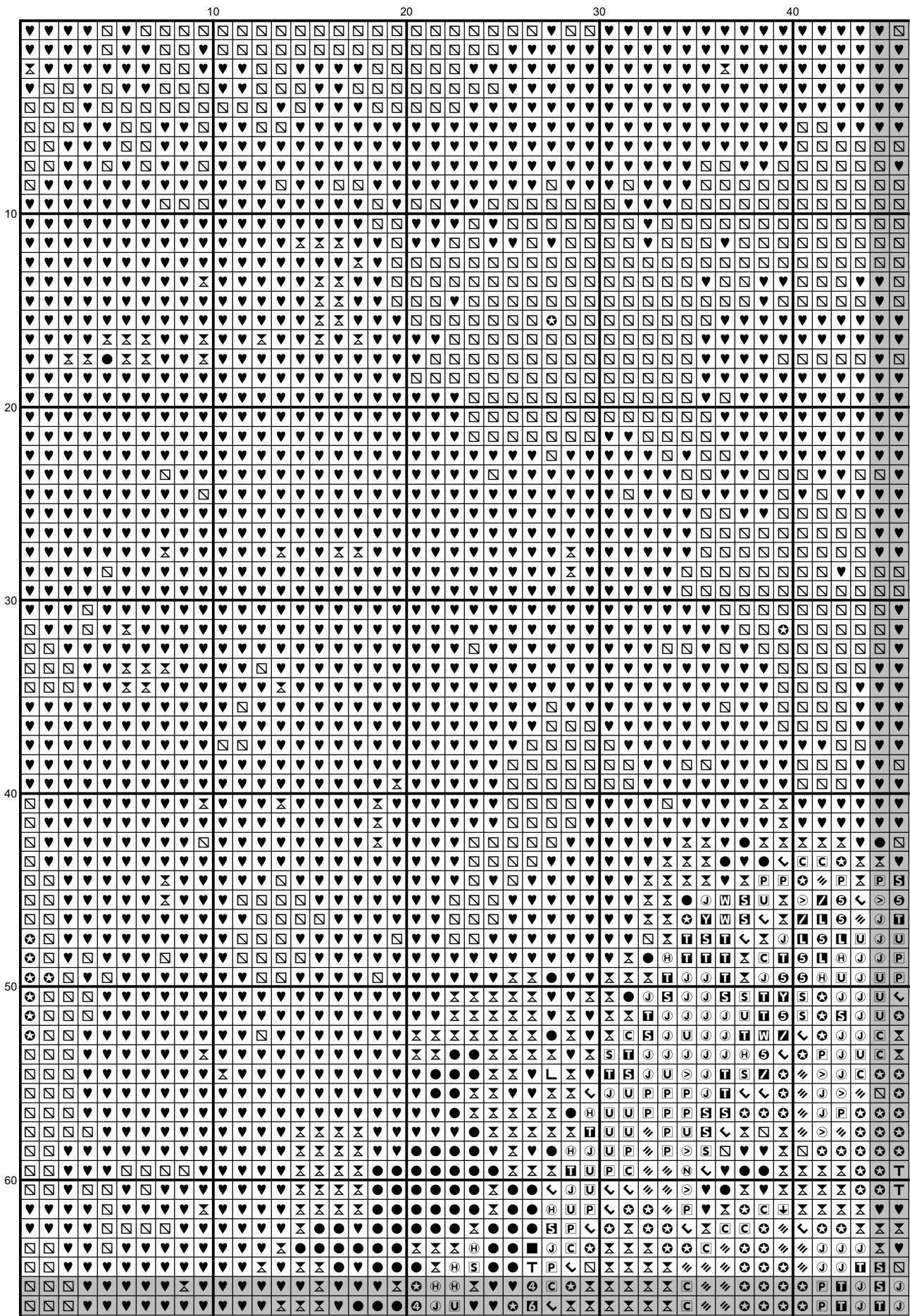
Pattern Pages are in the following order plus the symbol key

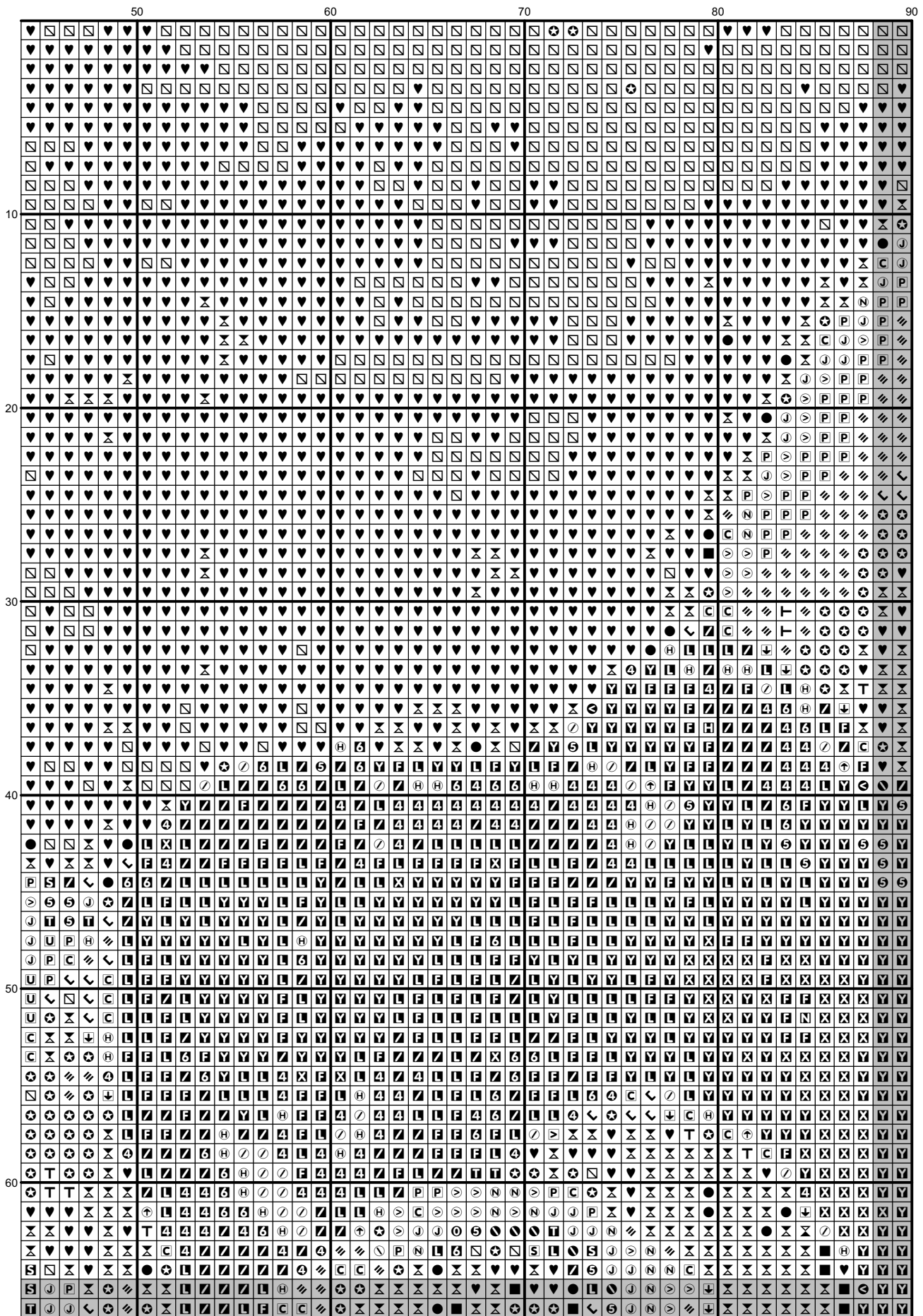
1	2	3	4	5	6
7	8	9	10	11	12
13	14	15	16	17	18
19	20	21	22	23	24

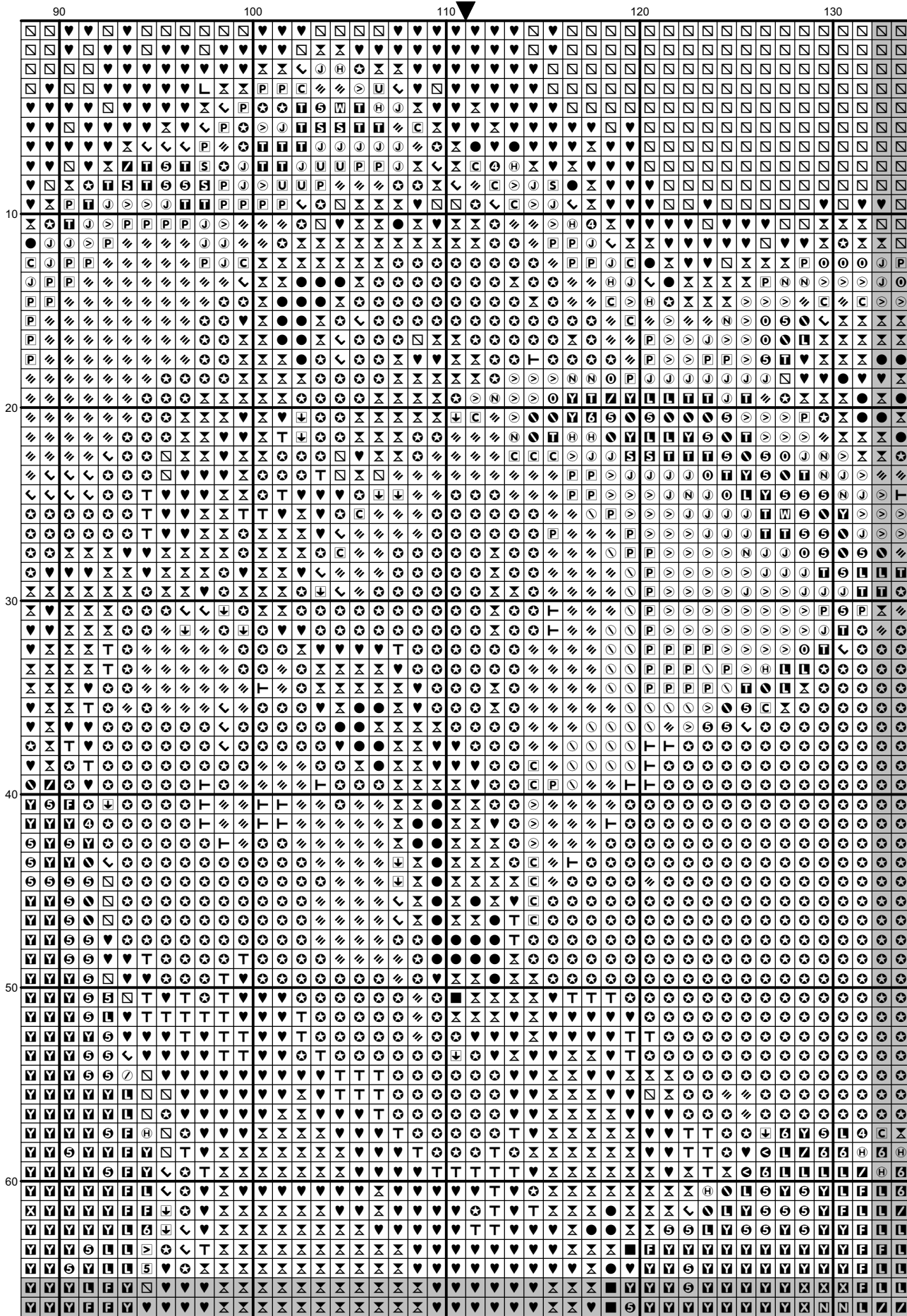
Thread lengths for Fr 344 Feathereed Tulips

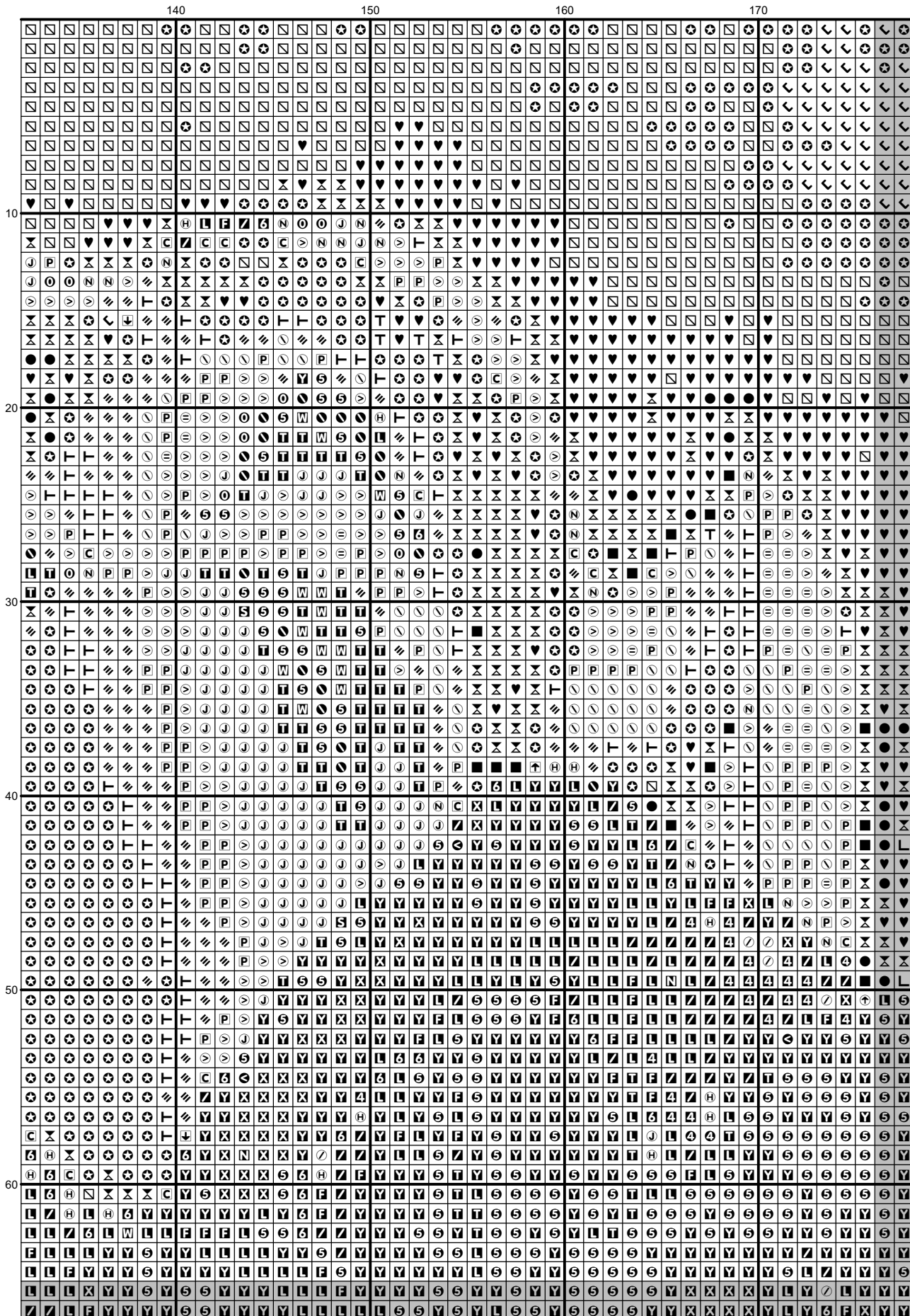
(DMC)	Description		skeins
154	Prune rose		2
155	Mauve violet		1
159	Light blue grey		1
168	Mouse grey		2
209	Lilac		1
210	Light violet		1
211	Pale violet	3	
310	Black		2
317	Steel grey	1	
318	Granite grey		1
319	Shadow green		1
320	Fern green		1
327	Dark violet		1
367	Bay leaf green		1
414	Lead grey		1
415	Chrome grey		2
451	Shell pink grey		1
452	Pigeon grey		1
469	Dark moss green		1
470	Olive green		1
471	Tarragon green		1
500	Ivy green		1
520	Dark fern green		1
522	Trellis green		1
523	Ash green		1
524	Light grey green		1
535	Stone grey		1
550	Blackcurrant		3
552	Violet		1
553	Amethyst violet		1
554	Pastel violet		1
580	Cactus green		1
581	Grashopper green		1
646	Platinum grey		1
647	Rock grey		1
648	Pepper grey		1
762	Pearl grey	6	
823	Blueberry blue		4
838	Dark wood		1
844	Pepper black		1
890	Deep forest green		1
895	Bottle green		2
904	Avocado green		1
917	Bougainvillea fuschia		1
927	Oyster grey		1
928	Light pearl grey		1
934	Algae green		1
935	Undergrowth green		1
936	Oaktree moss green		1
937	Moss green		1

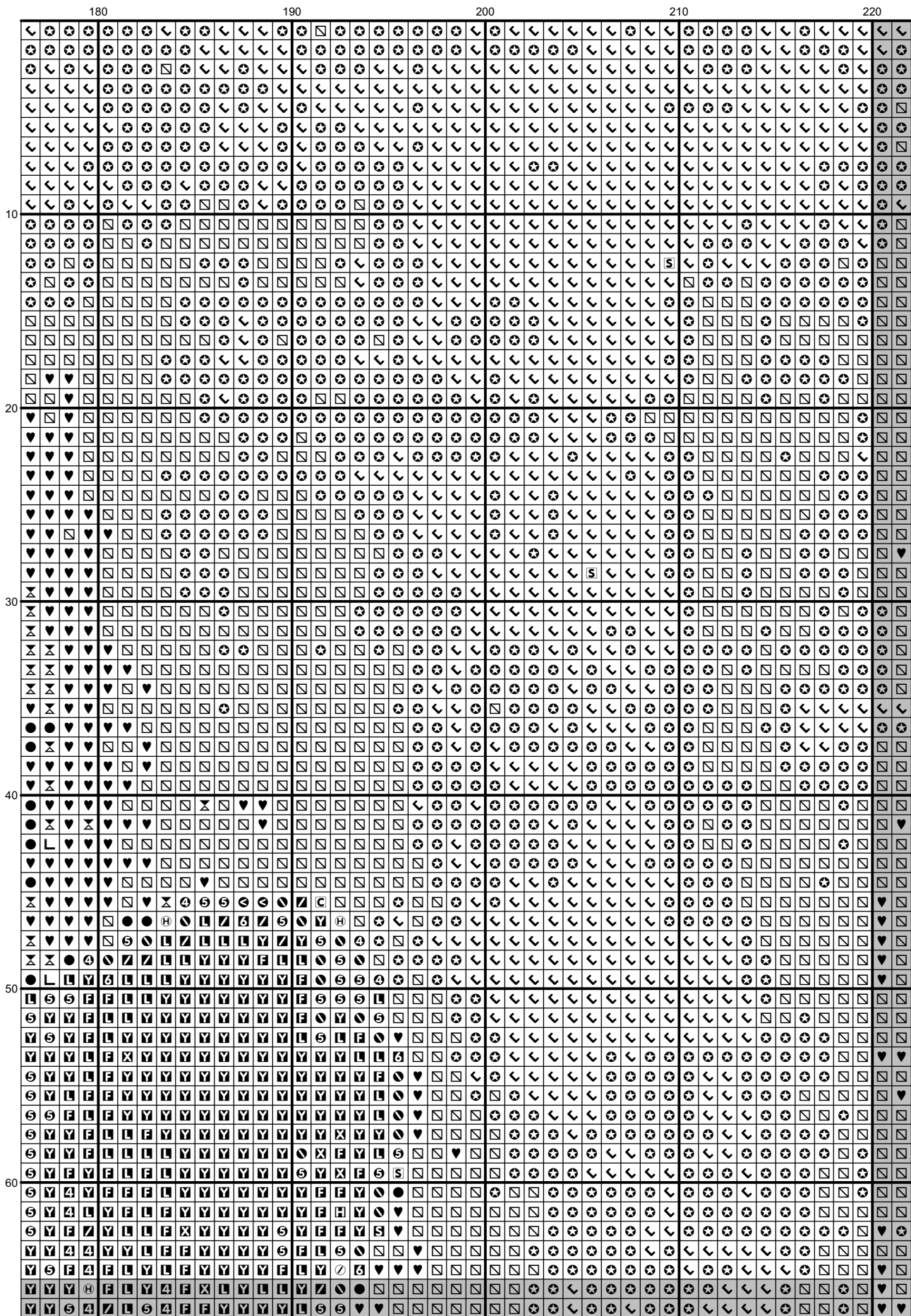
939	Dark navy blue	1
987	Basil green	1
988	Forest green	1
3011	Artichoke green	1
3022	Elephant grey	1
3023	Light platinum grey	1
3024	Pale steel grey	1
3041	Medium lilac	1
3042	Lilac	1
3052	Silver green	1
3072	Pale pearl grey	1
3345	Dark Hunter Green	1
3346	Hunter Green	1
3347	Insect green	1
3362	Fig tree green	1
3363	Herb green	1
3364	Sage green	1
3371	Ebony	1
3685	Dark mauve	1
3687	Raspberry mauve	1
3740	Dark antique violet	1
3743	Pale lilac	3
3746	Iris violet	1
3747	Pale candy blue	1
3756	Cloud blue	1
3787	Wolf grey	1
3799	Anthracite grey	3
3836	Light grape	1
3866	Garlic cream	1

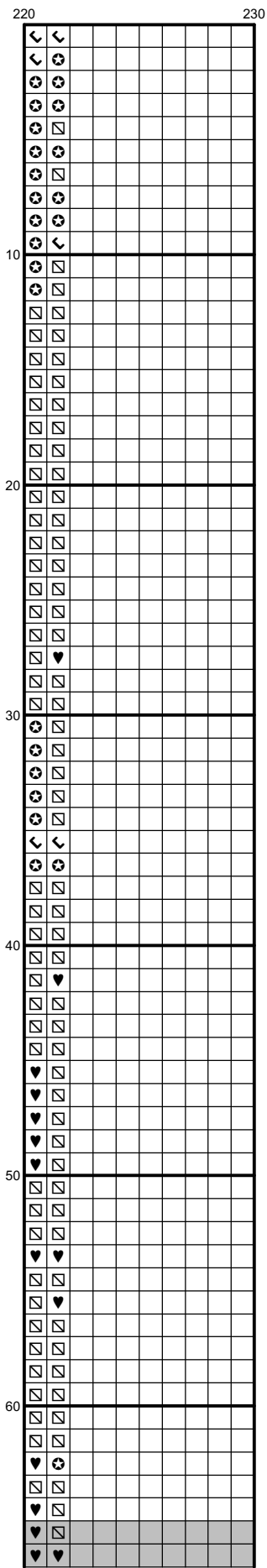


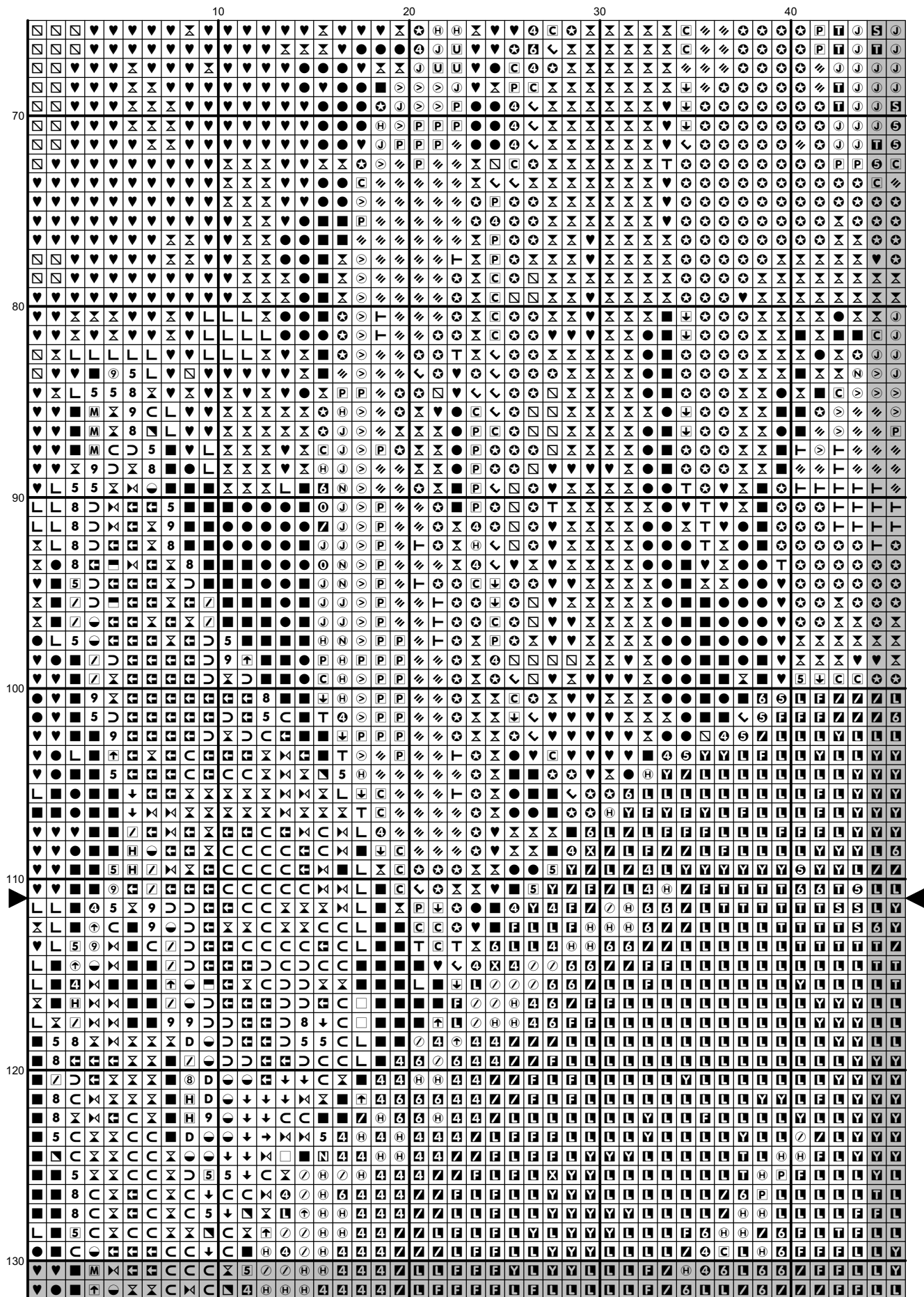


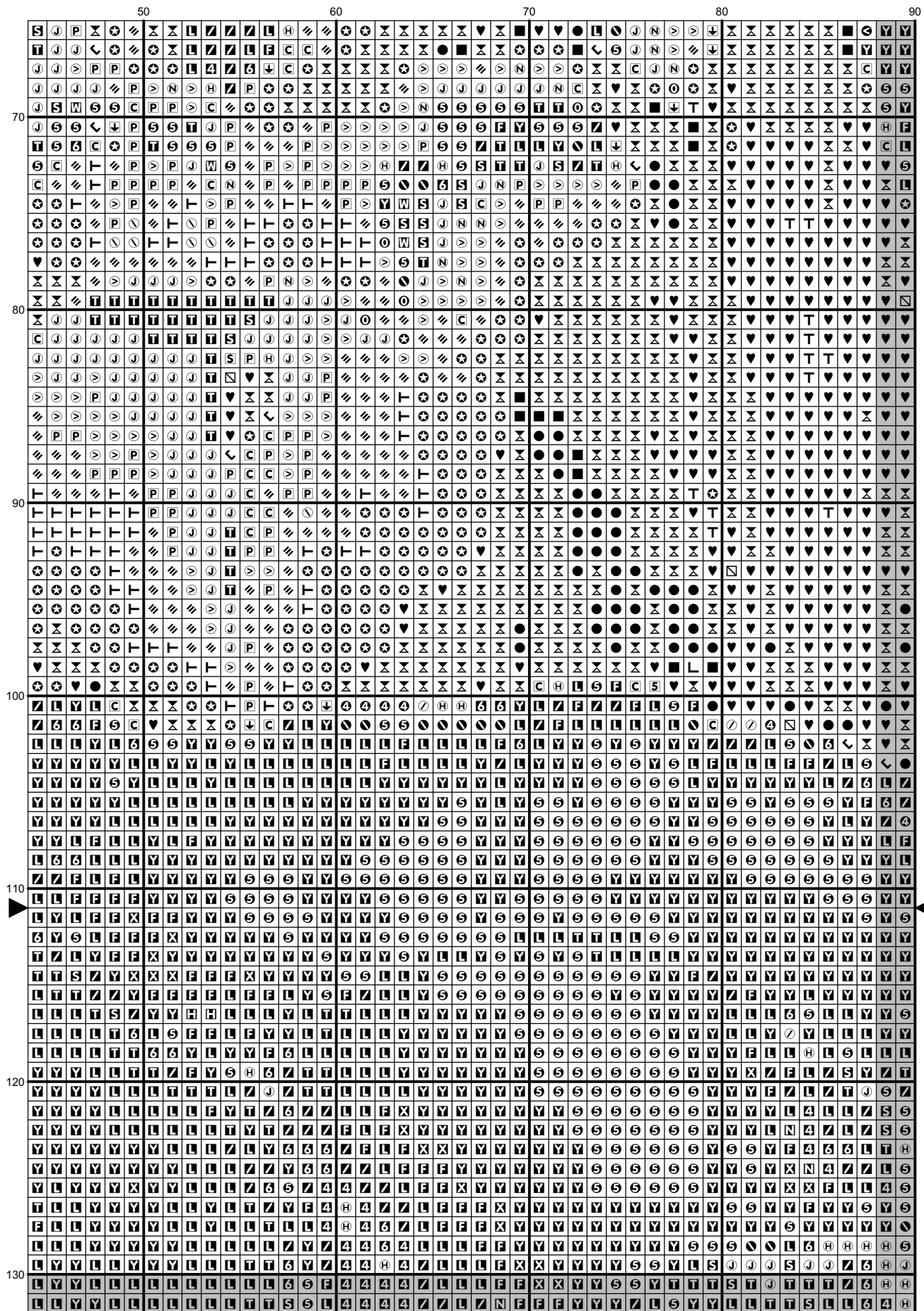


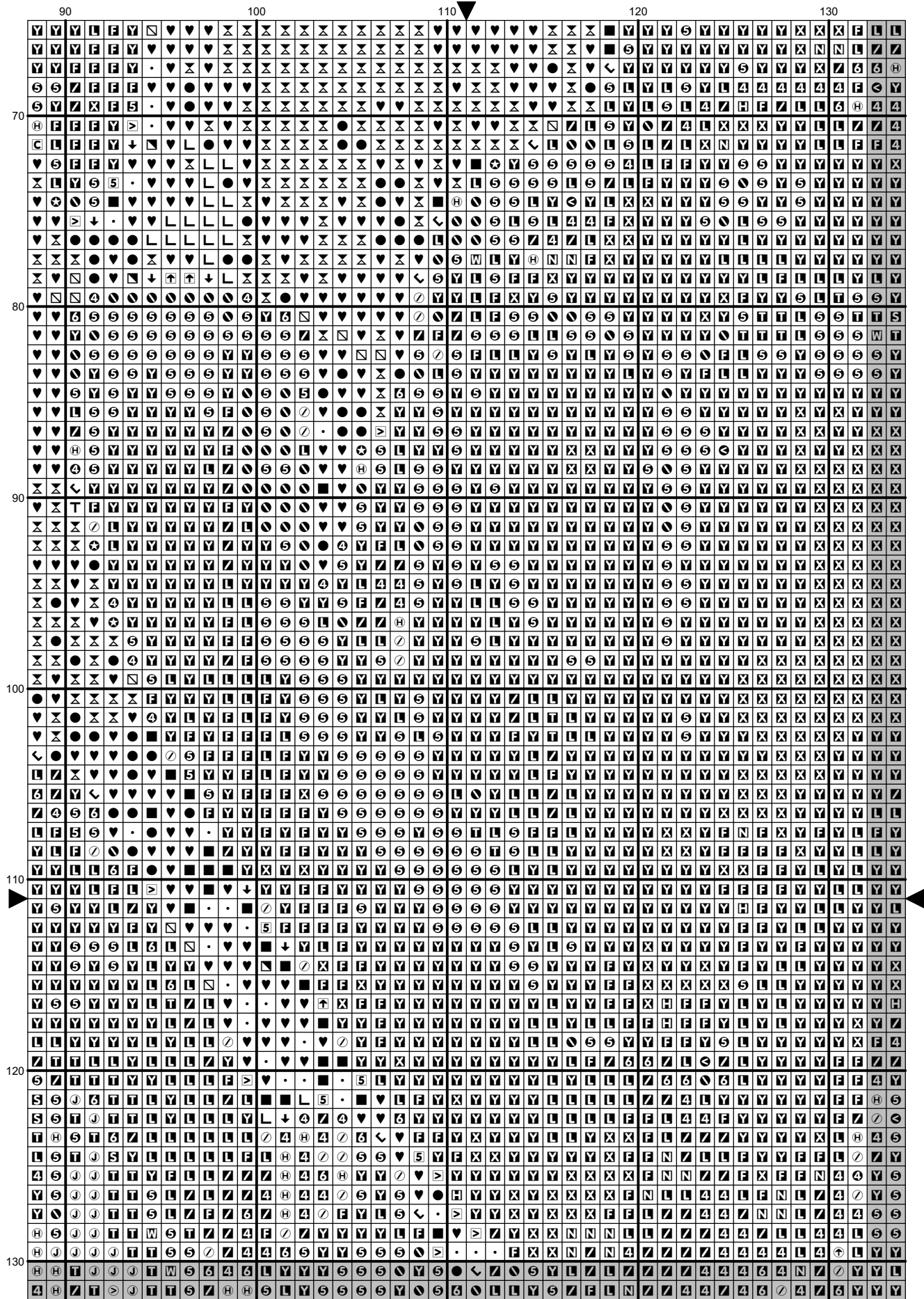


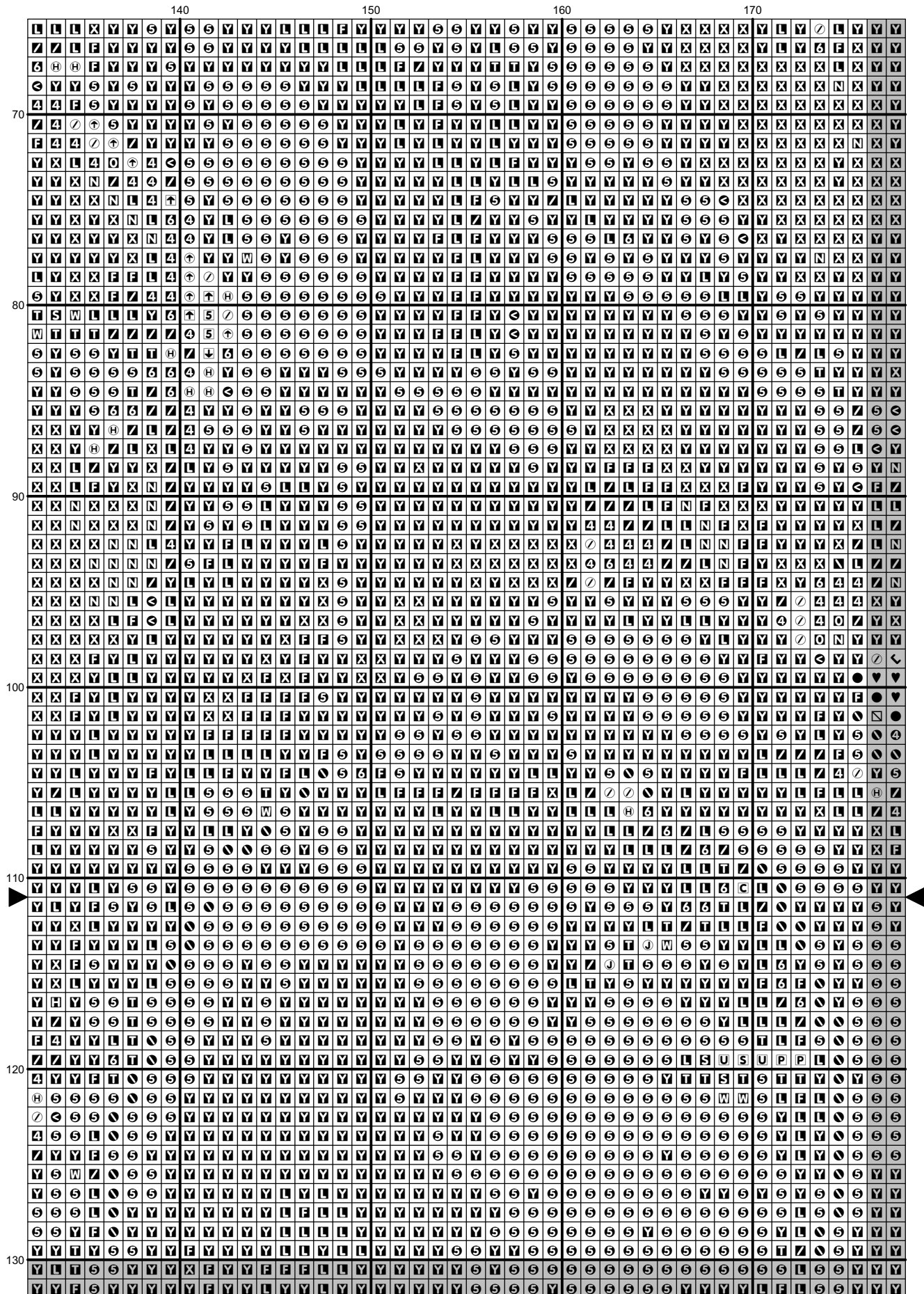


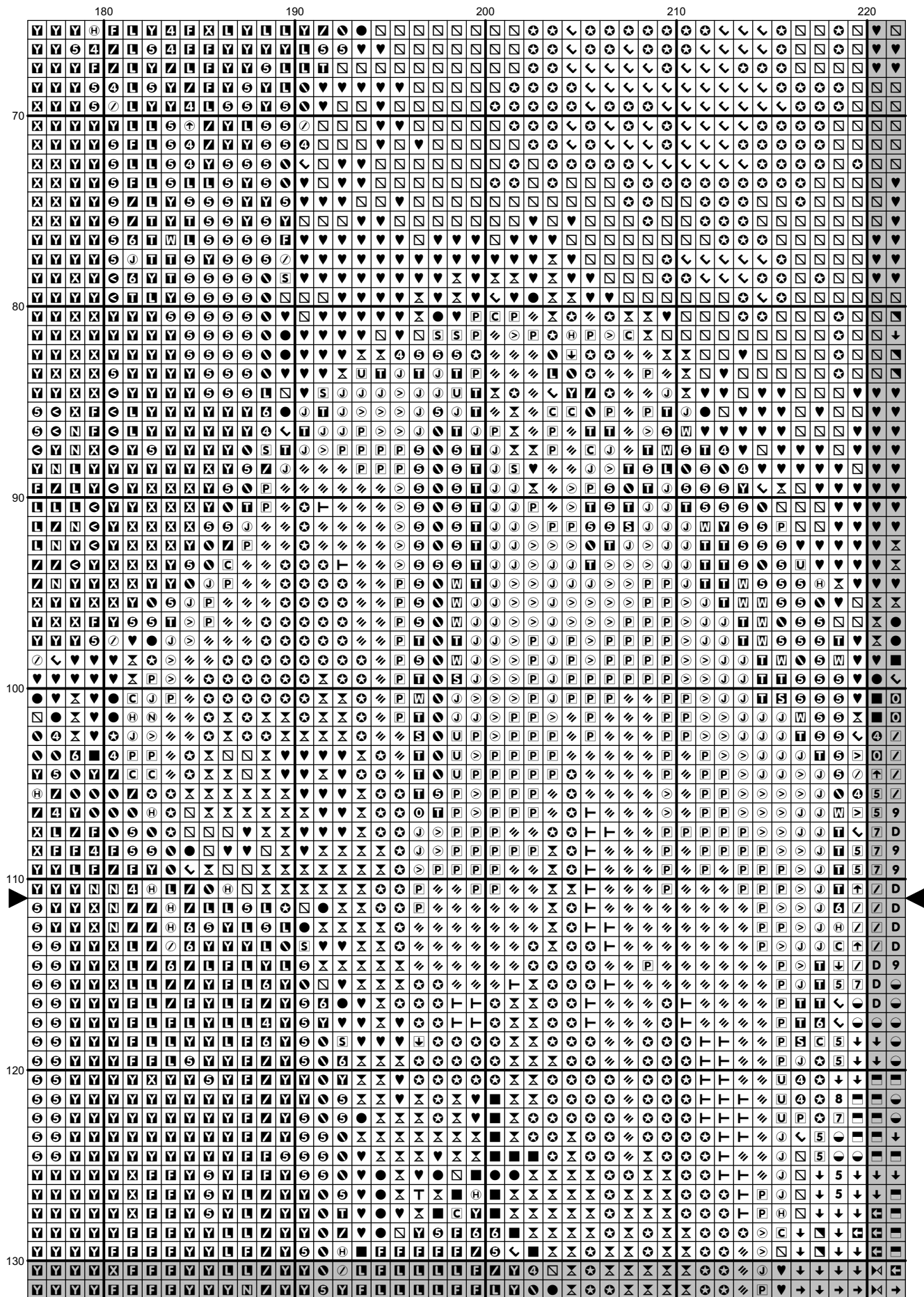


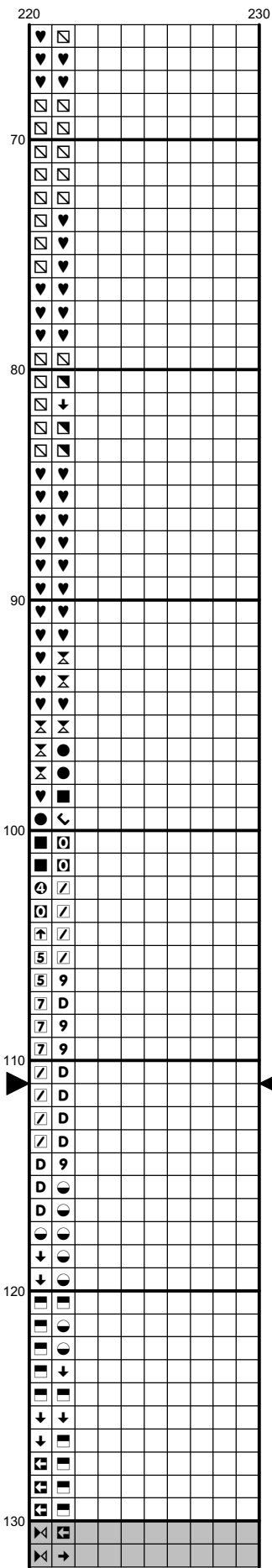


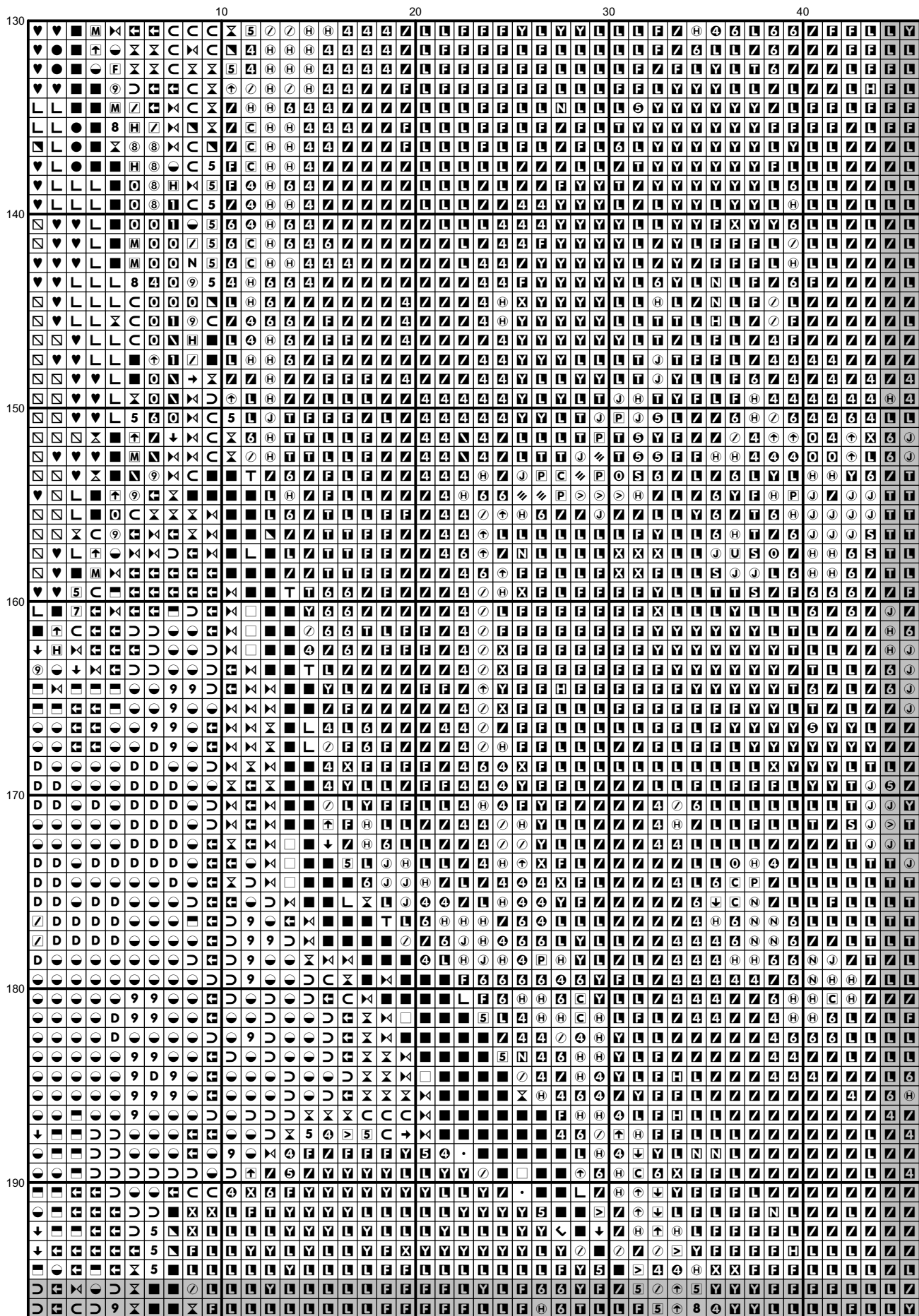


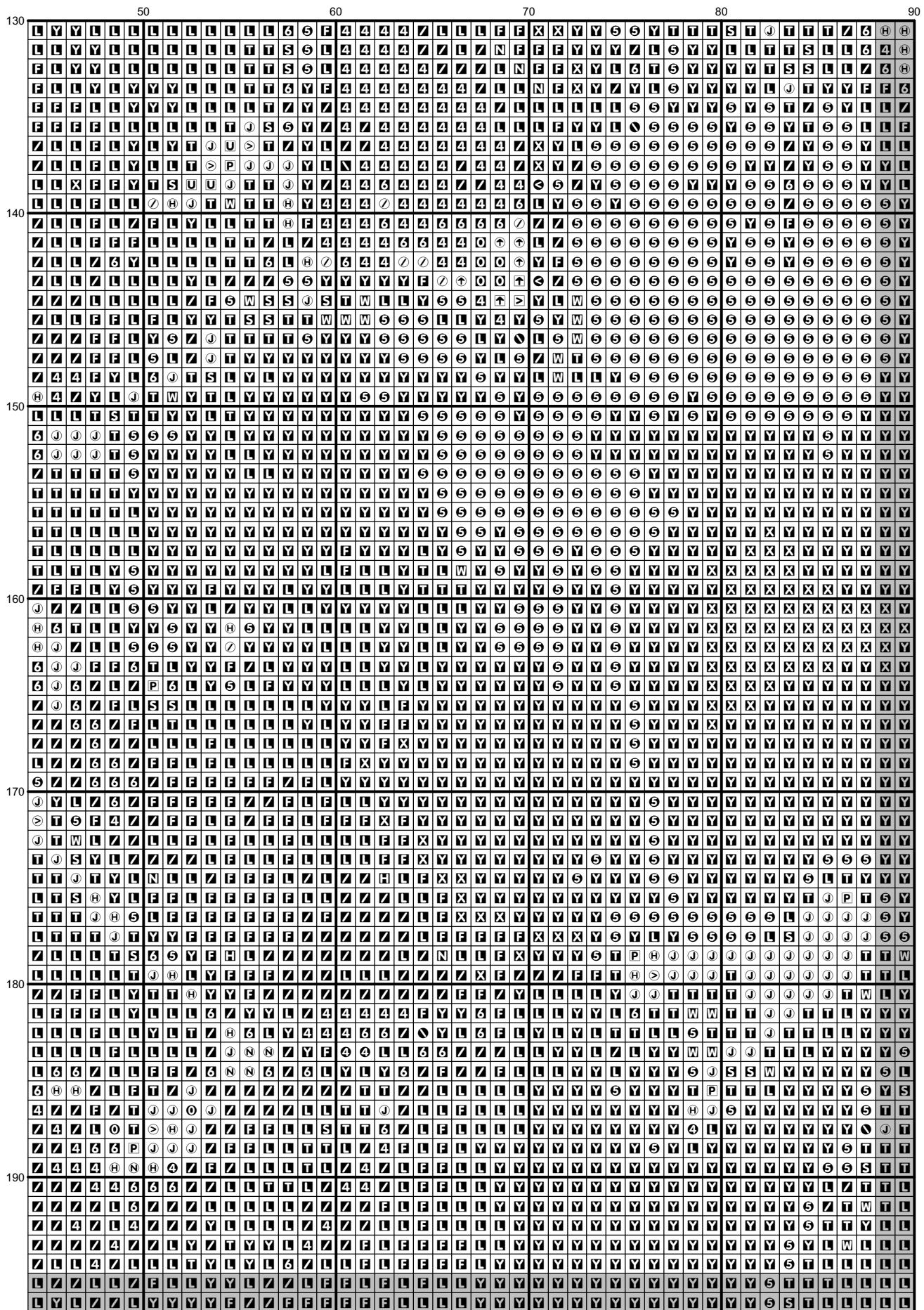


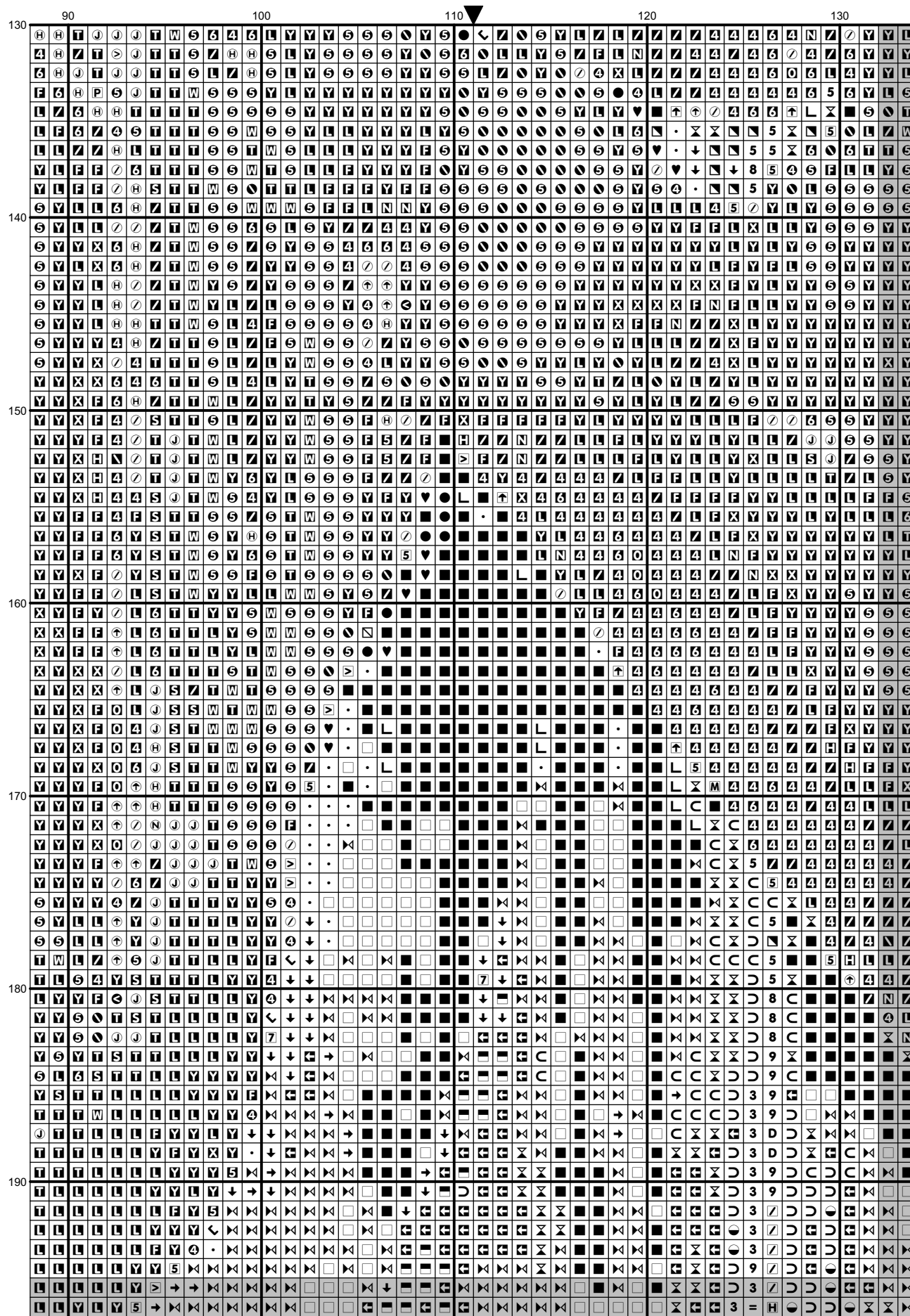


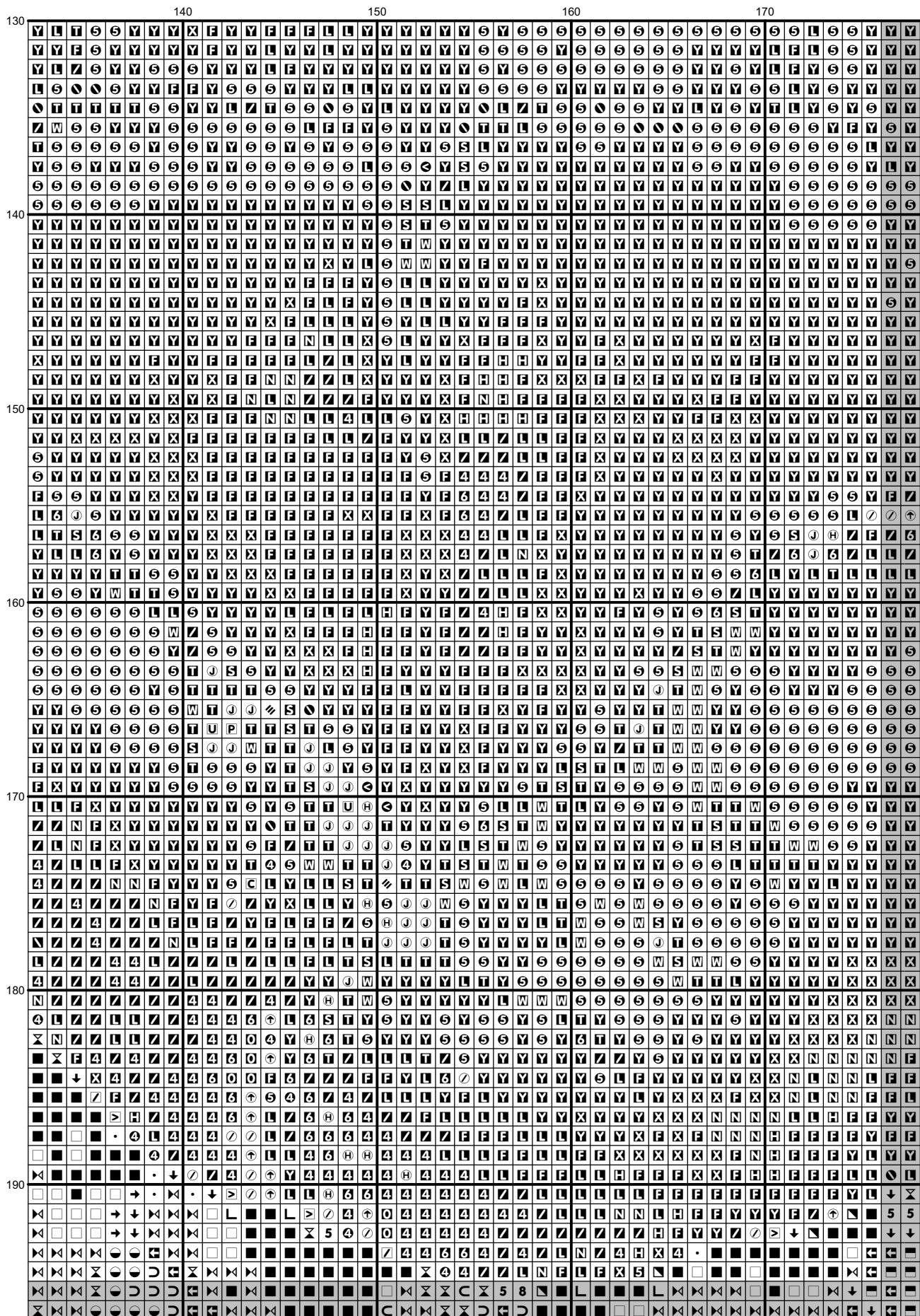


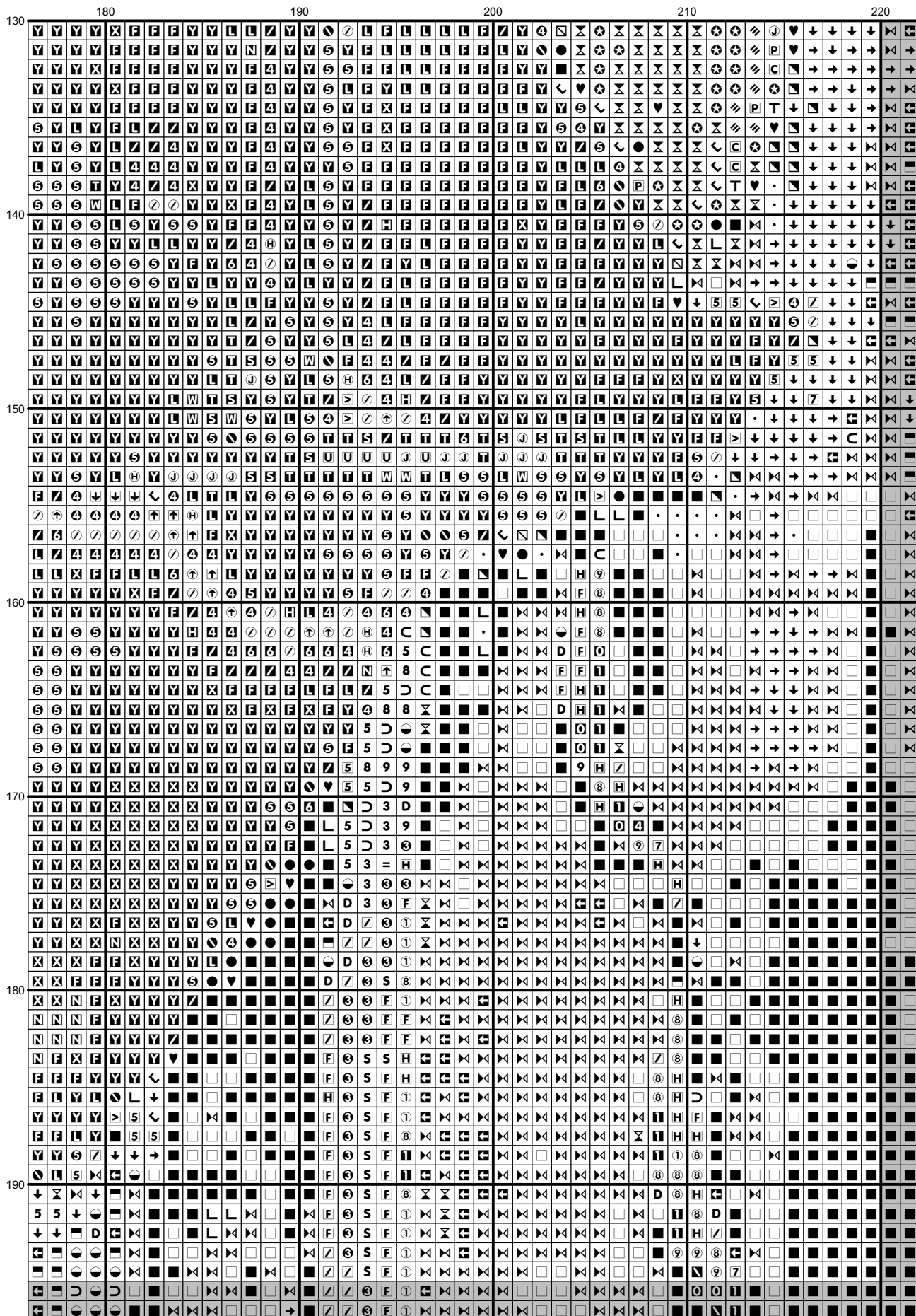


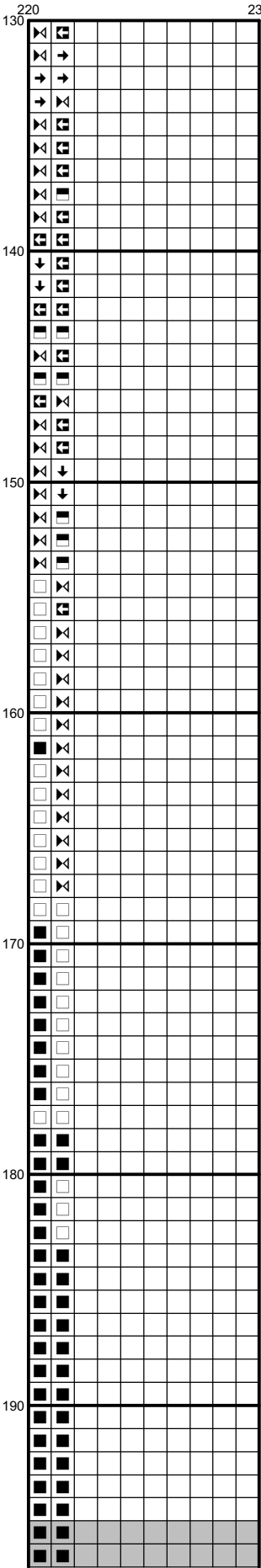


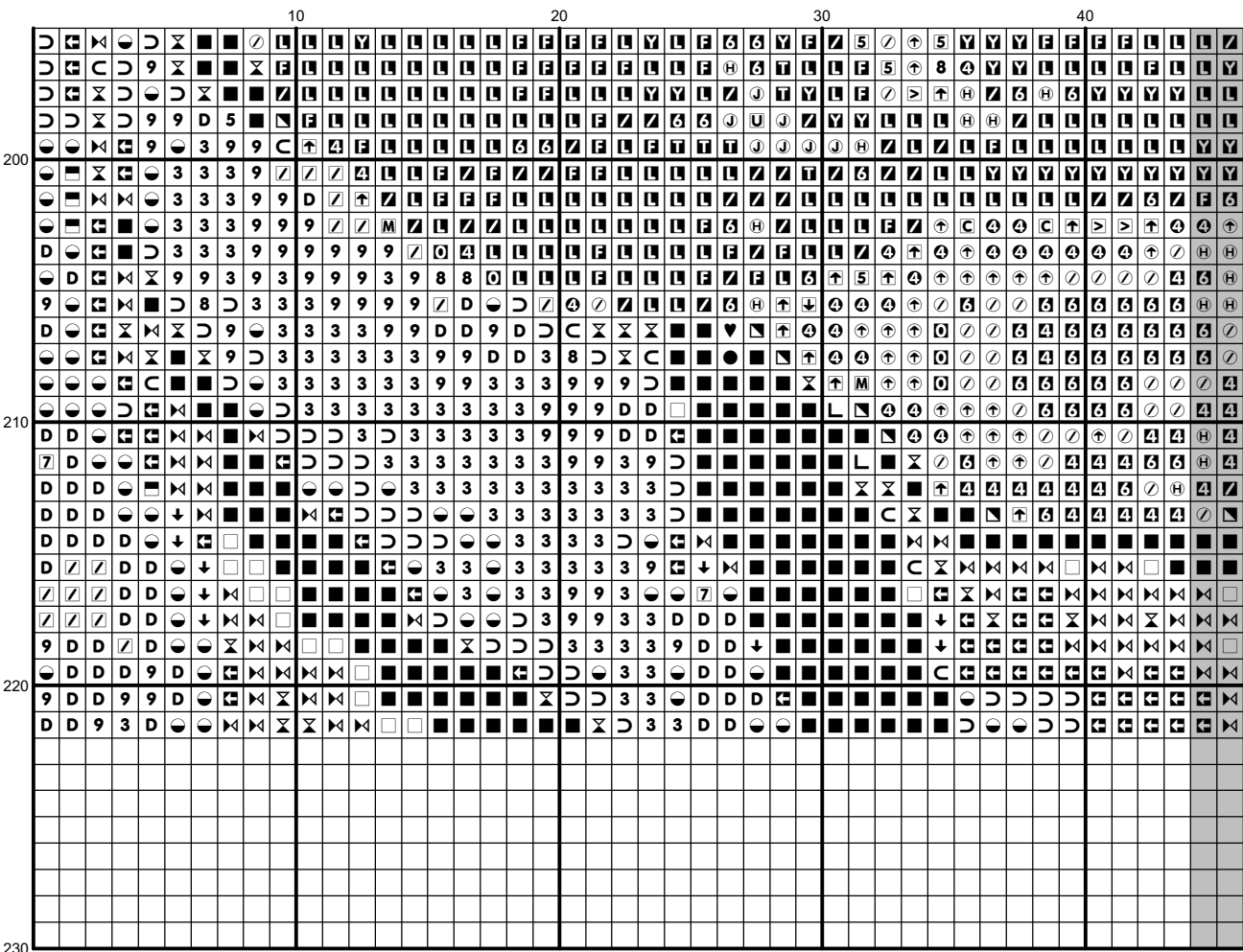


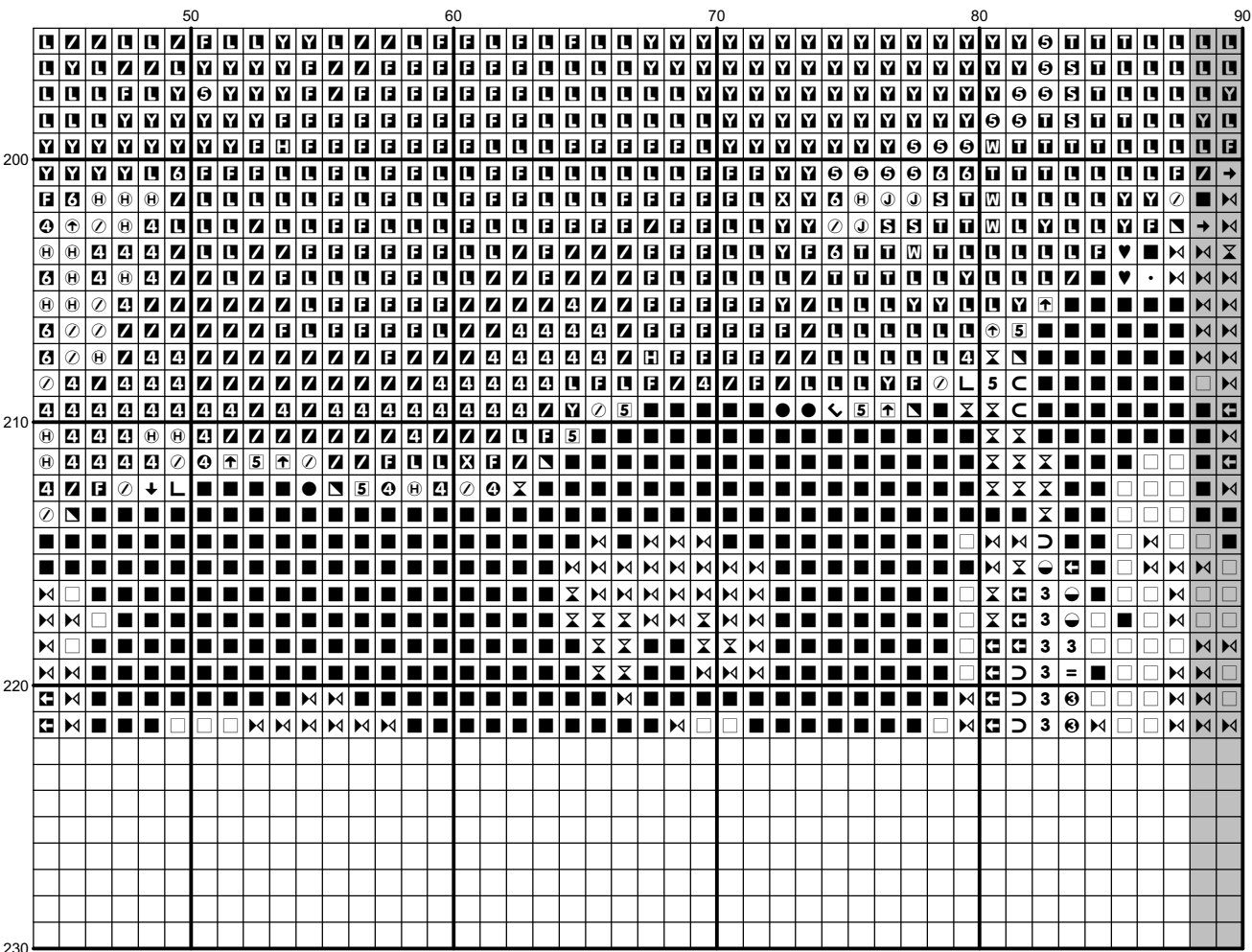


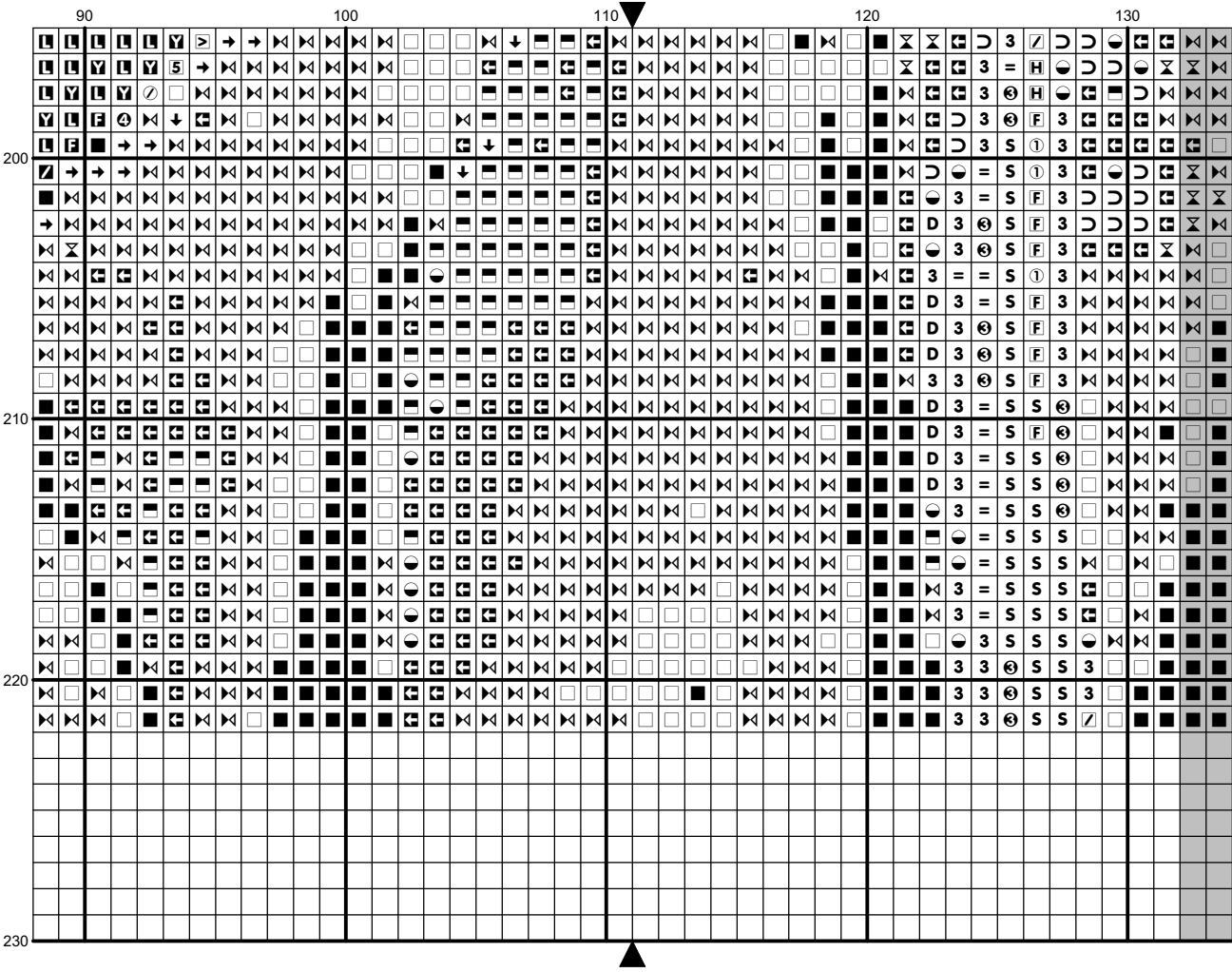


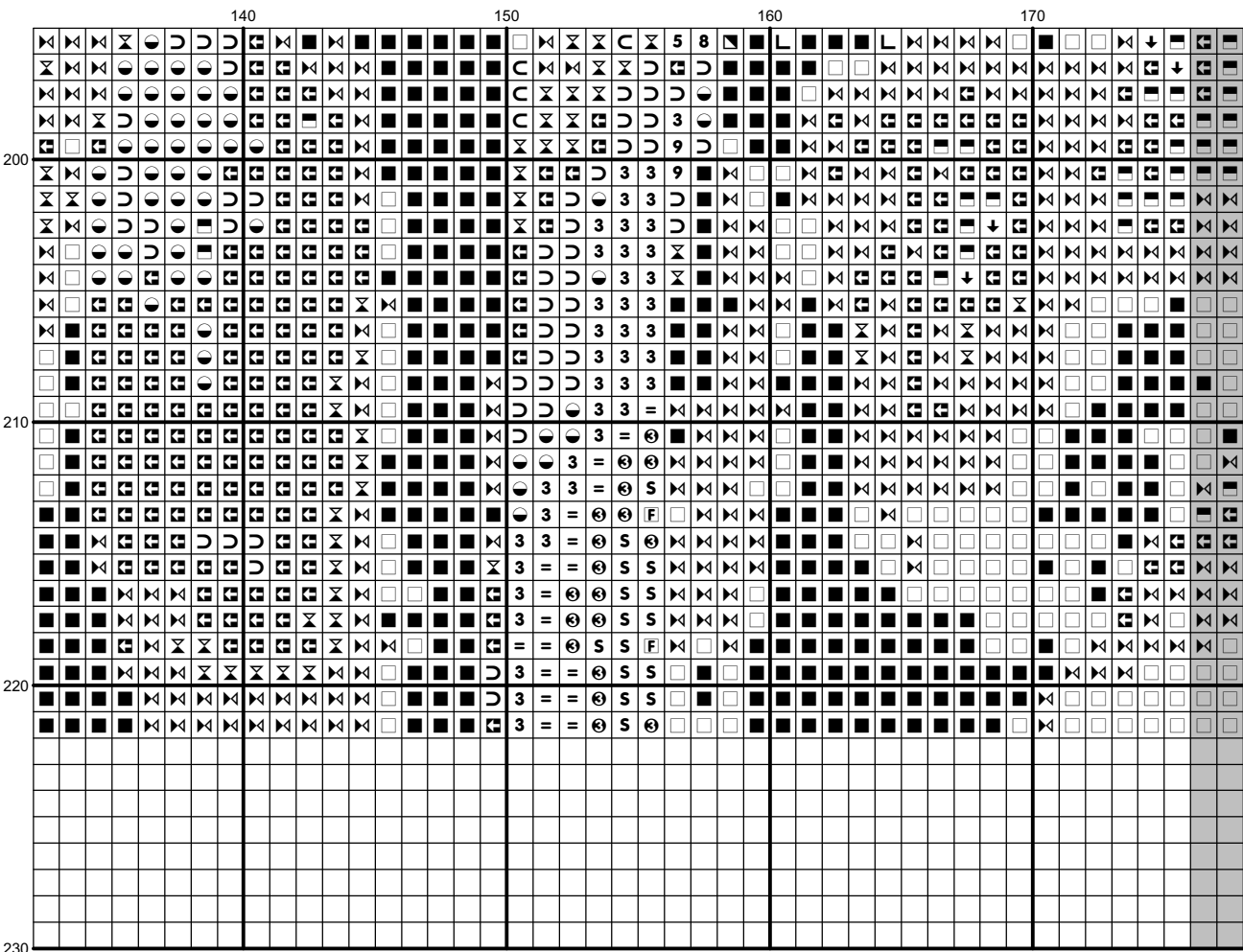


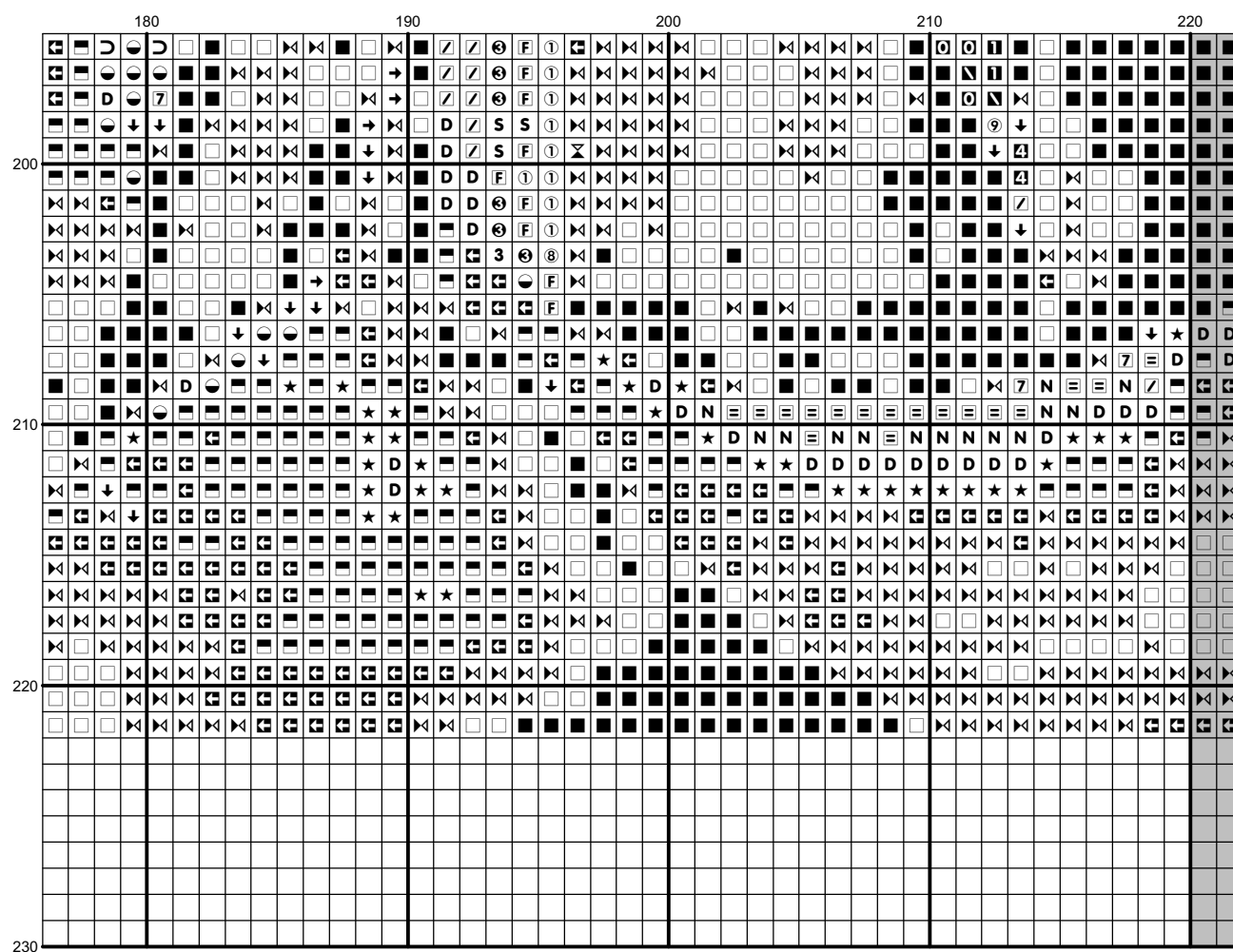


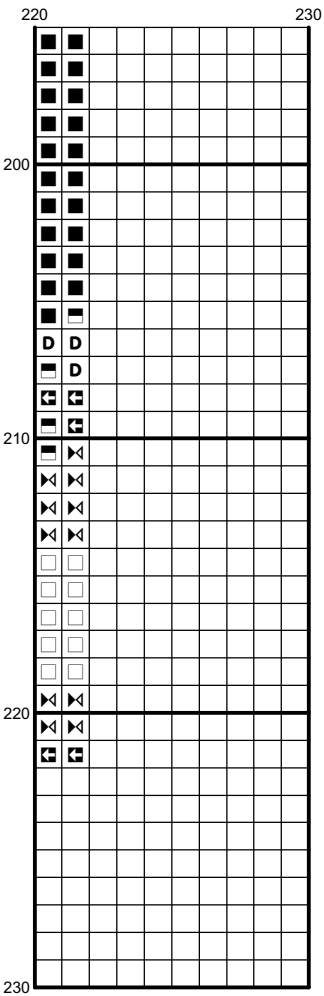












Instructions and Symbol Key for Design "Fr 344 Feathereed Tulips"

Fabric: 14 count Aida

Stitches: 222 x 222 **Size:** 15.86 x 15.86 inches or 40.28 x 40.28 cm

Colours: DMC

Use **2** strands of thread for cross stitch

Sym	No.	Colour Name	Sym	No.	Colour Name
	154	Prune rose		155	Mauve violet
	159	Light blue grey		168	Mouse grey
	209	Lilac		210	Light violet
	211	Pale violet		310	Black
	317	Steel grey		318	Granite grey
	319	Shadow green		320	Fern green
	327	Dark violet		367	Bay leaf green
	414	Lead grey		415	Chrome grey
	451	Shell pink grey		452	Pigeon grey
	469	Dark moss green		470	Olive green
	471	Tarragon green		500	Ivy green
	520	Dark fern green		522	Trellis green
	523	Ash green		524	Light grey green
	535	Stone grey		550	Blackcurrant
	552	Violet		553	Amethyst violet
	554	Pastel violet		580	Cactus green
	581	Grashopper green		646	Platinum grey
	647	Rock grey		648	Pepper grey
	762	Pearl grey		823	Blueberry blue
	838	Dark wood		844	Pepper black
	890	Deep forest green		895	Bottle green
	904	Avocado green		917	Bougainvillea fuschia
	927	Oyster grey		928	Light pearl grey
	934	Algae green		935	Undergrowth green
	936	Oaktree moss green		937	Moss green
	939	Dark navy blue		987	Basil green
	988	Forest green		3011	Artichoke green
	3022	Elephant grey		3023	Light platinum grey
	3024	Pale steel grey		3041	Medium lilac
	3042	Lilac		3052	Silver green
	3072	Pale pearl grey		3345	Dark Hunter Green
	3346	Hunter Green		3347	Insect green
	3362	Fig tree green		3363	Herb green
	3364	Sage green		3371	Ebony
	3685	Dark mauve		3687	Raspberry mauve
	3740	Dark antique violet		3743	Pale lilac
	3746	Iris violet		3747	Pale candy blue
	3756	Cloud blue		3787	Wolf grey
	3799	Anthracite grey		3836	Light grape
	3866	Garlic cream			

error, printing mistakes or the variation of individual stitching does exist, and we regret that we cannot be responsible for this.

Note: The shaded blocks on the chart represent overlapping stitches.
Copyright © Classic Cross Stitch 2008 All rights reserved.